

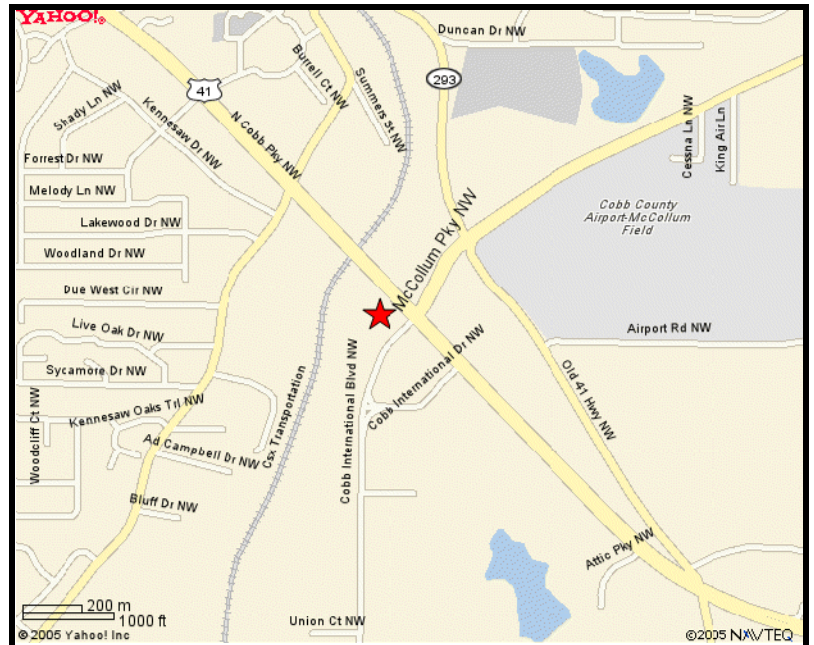


Woodall Realty Company

COBB INTERNATIONAL PARK



- ❖ Excellent Kennesaw location close to I-75
- ❖ Located across Highway 41 from McCollum Airport
- ❖ Contiguous space from 4,000SF – 6,000SF
- ❖ Flexible Lease Terms
- ❖ Available to show by lockbox (located on Suites 7)



Oran D. Woodall

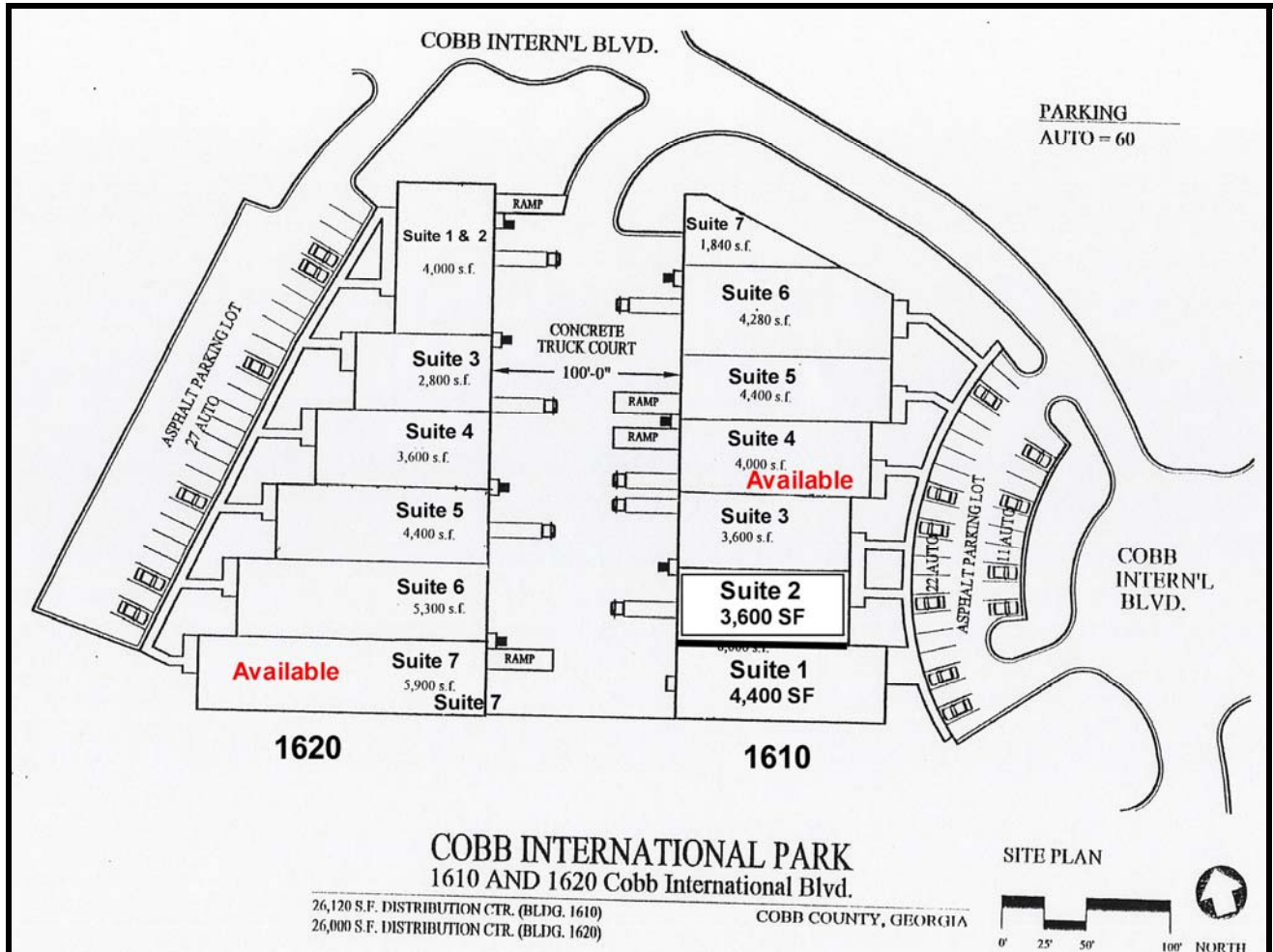
3155 Roswell Rd., Suite 100, Atlanta, GA 30305  Tel: 404.237.8638 Fax: 404.237.1669

The above information is believed to be correct but is not warranted



Woodall Realty Company

SITE PLAN



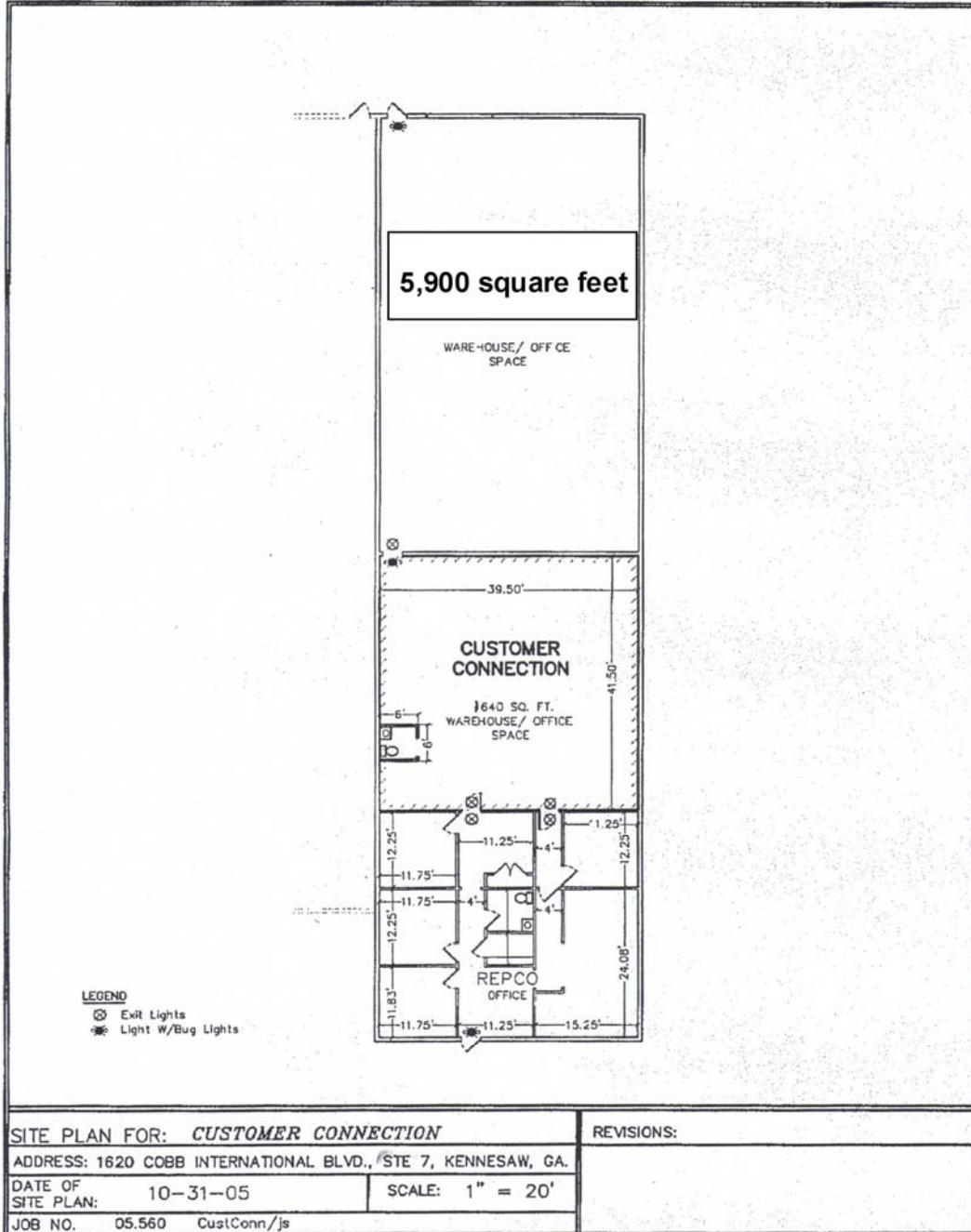
Oran D. Woodall

3155 Roswell Rd., Suite 100, Atlanta, GA 30305 wRc Tel: 404.237.8638 Fax: 404.237.1669

The above information is believed to be correct but is not warranted



Woodall Realty Company
FLOOR PLAN
1620 – Suite 7



Oran D. Woodall

3155 Roswell Rd., Suite 100, Atlanta, GA 30305 wRc Tel: 404.237.8638 Fax: 404.237.1669

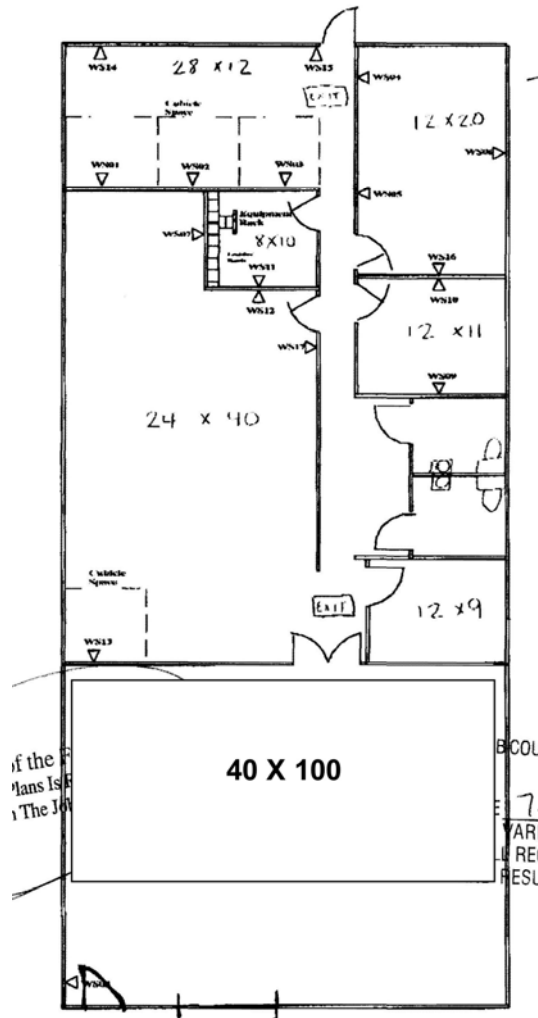
The above information is believed to be correct but is not warranted



Woodall Realty Company
FLOOR PLAN
1610 – Suite 4

Reference Drawing

Frc



of the
Plans Is
The Jo

B COL
7.
YARI
REI
RESL

Oran D. Woodall

3155 Roswell Rd., Suite 100, Atlanta, GA 30305 Tel: 404.237.8638 Fax: 404.237.1669

The above information is believed to be correct but is not warranted